

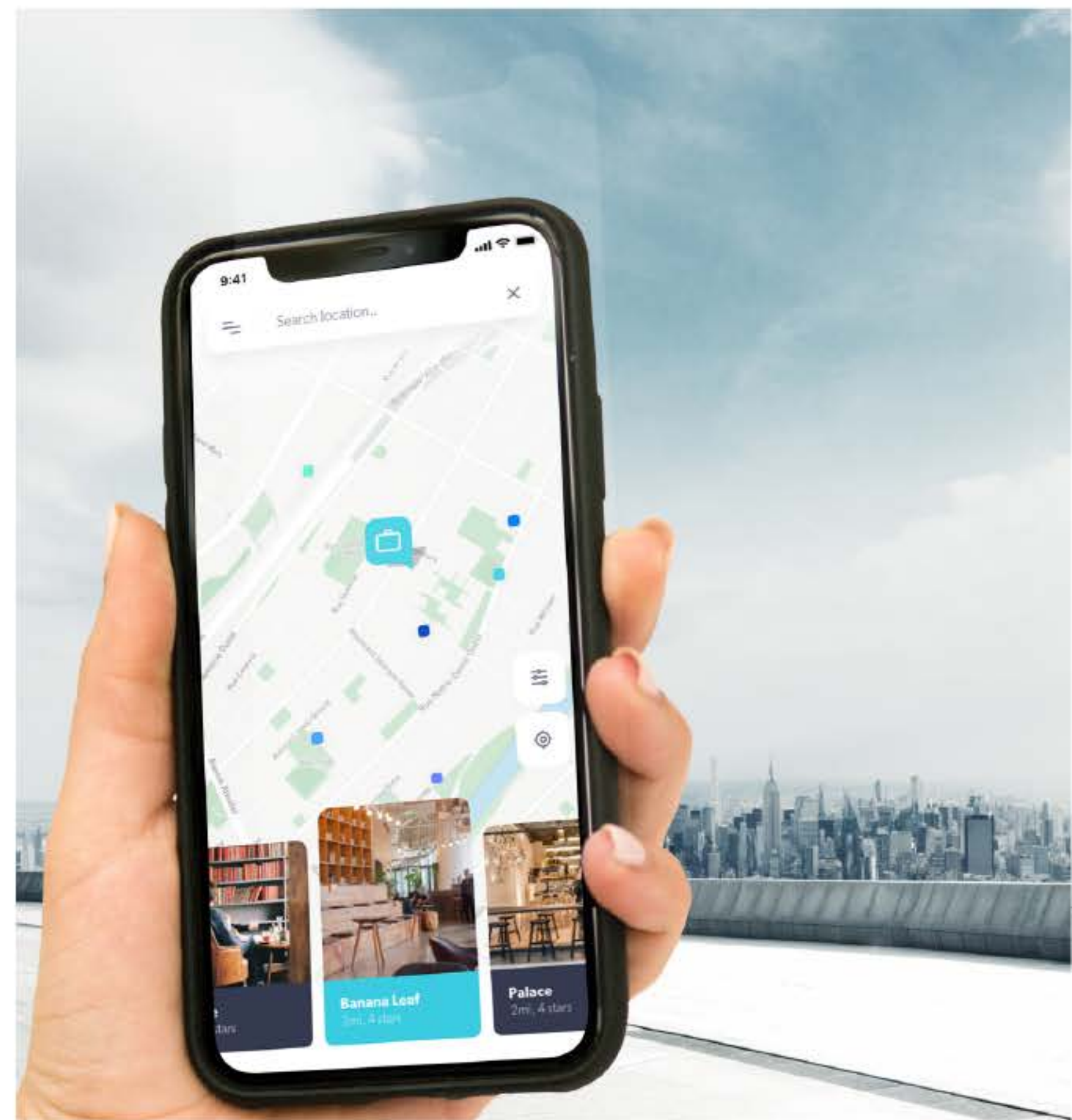


Find a workspace, anywhere.











# Table of Contents

---

01 The Problem

12 Development

04 Remotio

17 Testing

09 Research

19 Prototype

# The Problem

---

The Pandemic has brought remote working to the forefront of all business discussions. It has been a relief for many to work from home due to a reduced commute time, better work life balance and in some cases, greater productivity.

With this new way of working arose new problems, the most obvious one being that people spend the vast majority of their day surrounded by the same four walls.

Many employees are happy to work remotely if they can have the opportunity to work outside their homes. People need an accessible way to find places to work remotely, where ever they are.







# 40%

Of paid hours worked by employees were performed remotely at the height of the Pandemic.



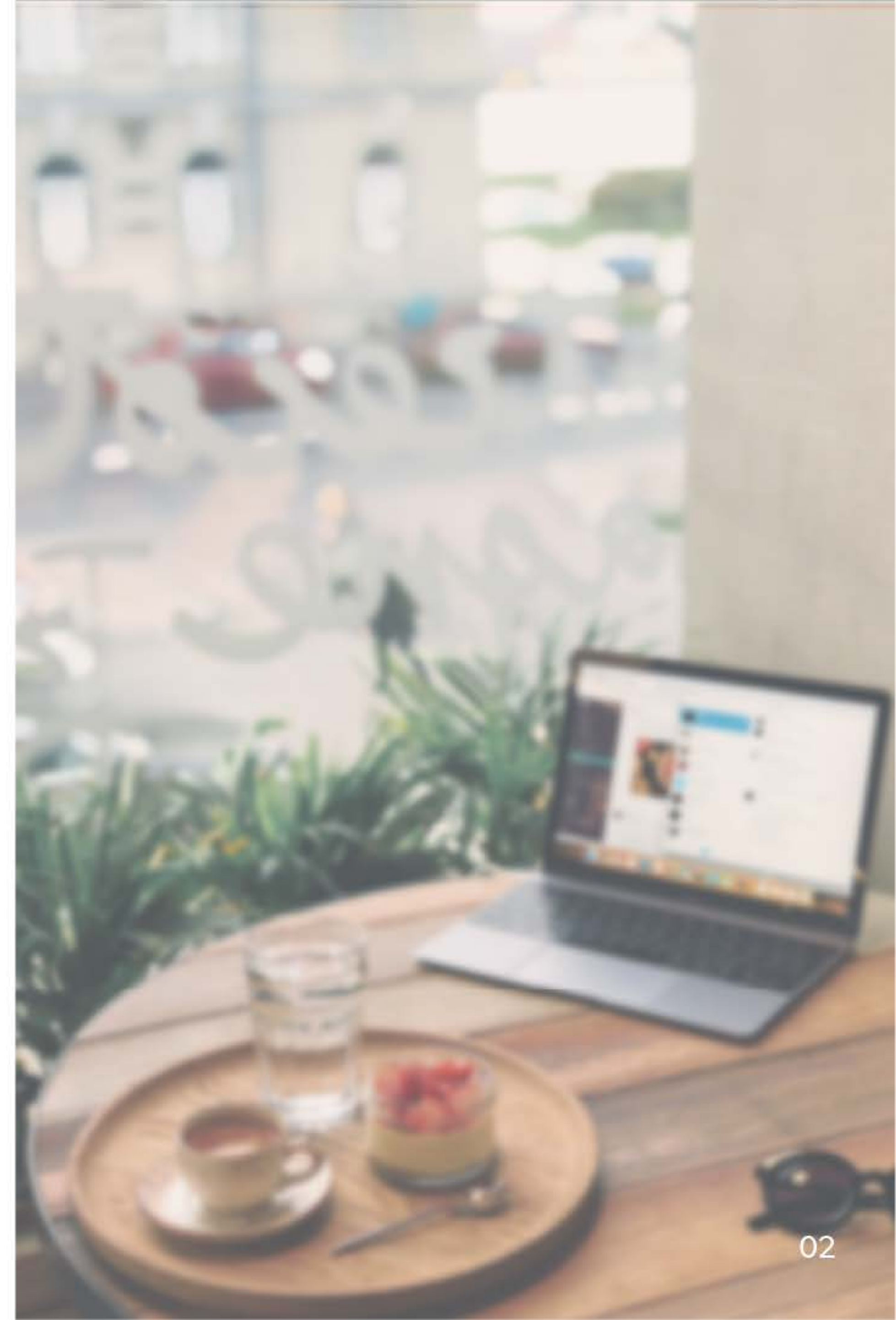
# 47%

Of people indicated that covid 19 had a direct impact on their working situtaion.



# 80%

Of people want to work remotely atleast one day per week.





**5th**

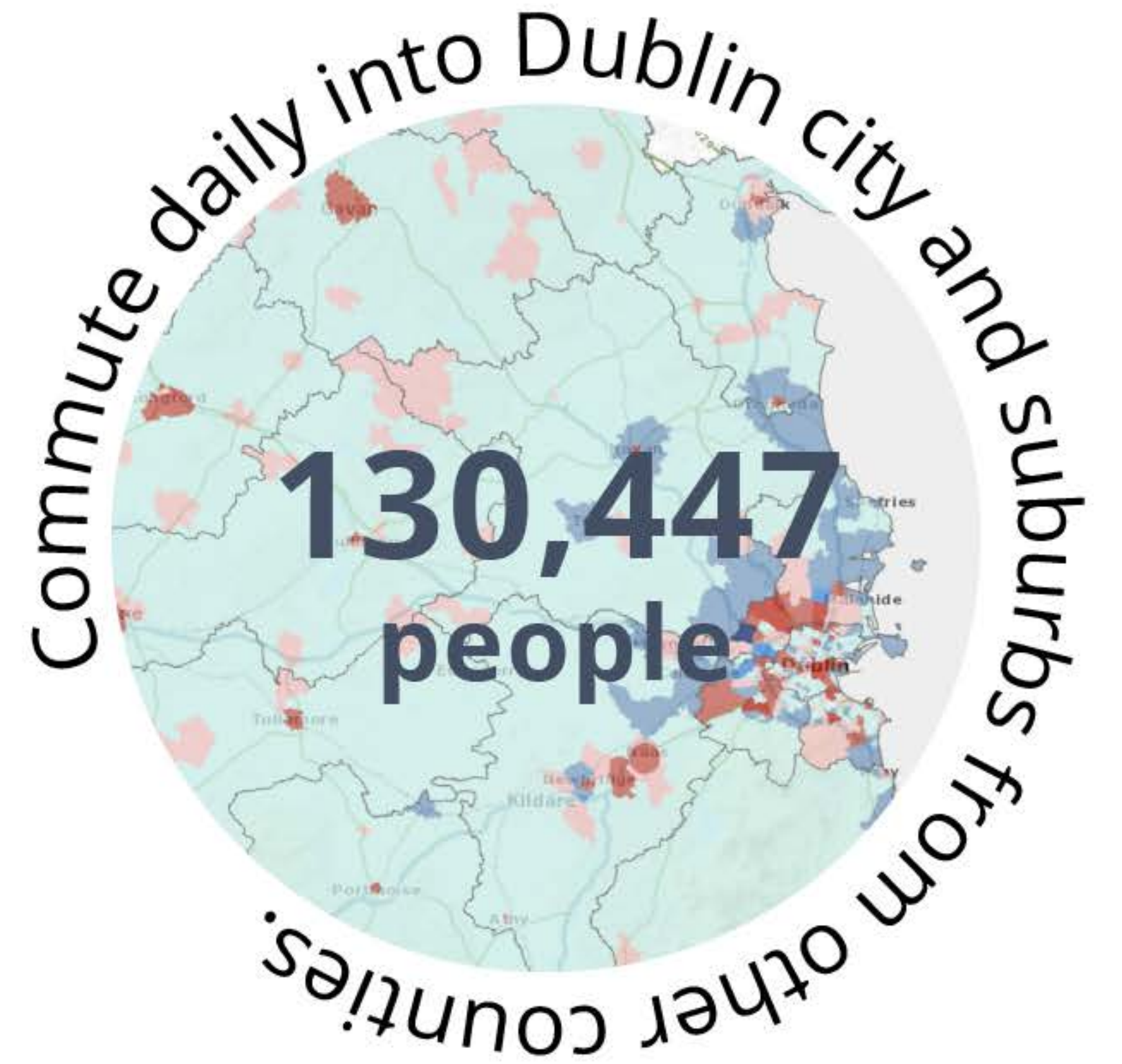
Dublin ranks 5th in the longest commute time of EU cities.

**20%**

Of Ireland's civil servants are to move to remote working by the end of the year.

**400**

Additional remote working hubs to be set up around the country.







## The Goal

We want to make it easy for people to advertise their premises as a remote working space to generate income.

We want to make it easy for people to find and book remote working spaces wherever they choose to work.



# How does Remotio work?



Use your current location or search to find a place to work near you.



View images, descriptions & reviews of verified premises.



Book your slot ahead of time & avail of benefits like discounts on coffee & food.



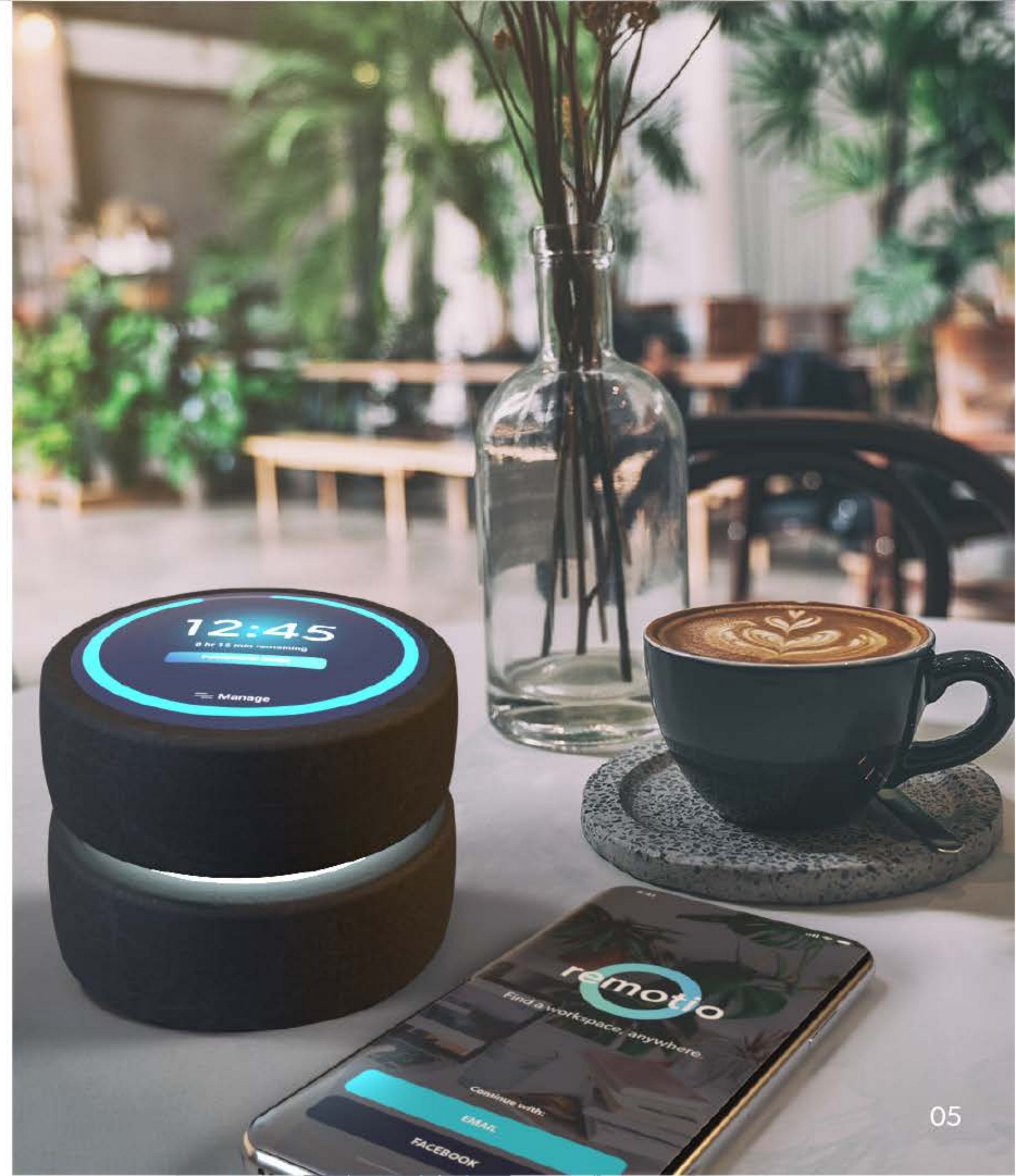
As a business owner, you can rent out your space to professionals for a fee.



Place the device on tables/desks you wish to rent out and workers will find them via app.



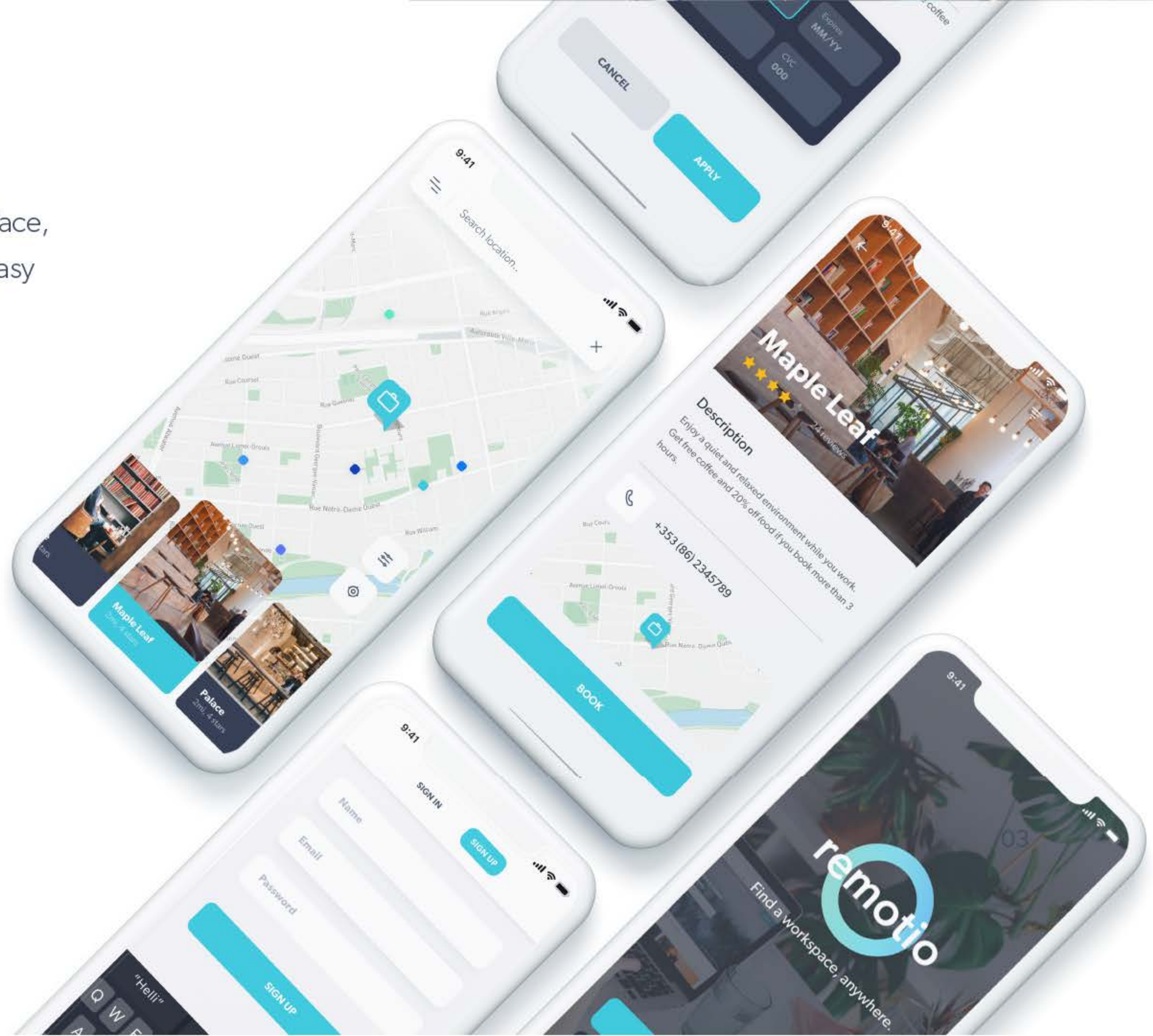
Only rent your space at times that suit you, the device will alert workers when their time is up.





# The App

Featuring a straight forward interface, our user tested app will make it easy for you to book/list a space.





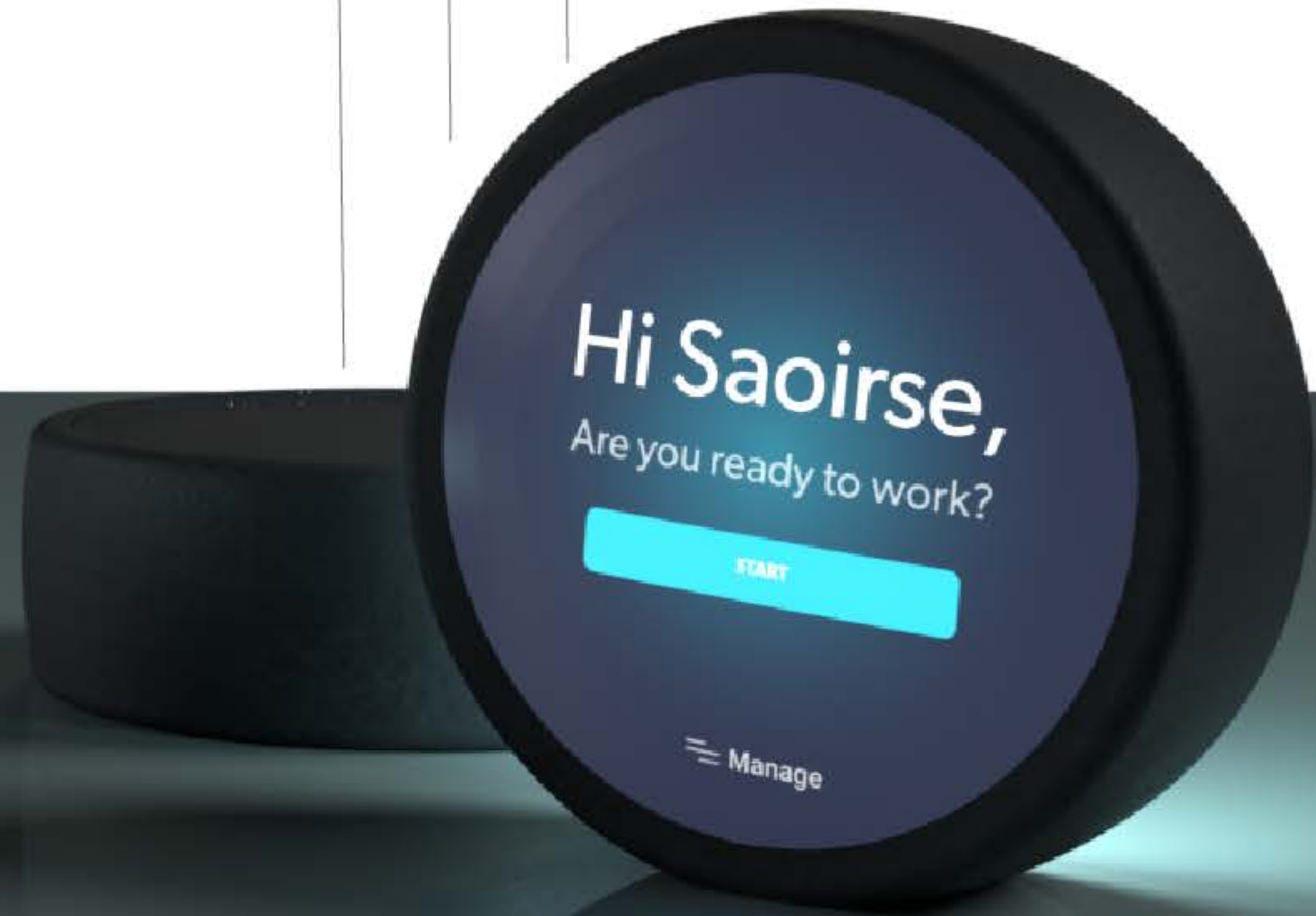
# The Device

The device helps businesses to manage bookings & lets users know how much time they have left. It also helps user be more productive with tools like Pomodoro.

Wireless charging base

Touch display screen

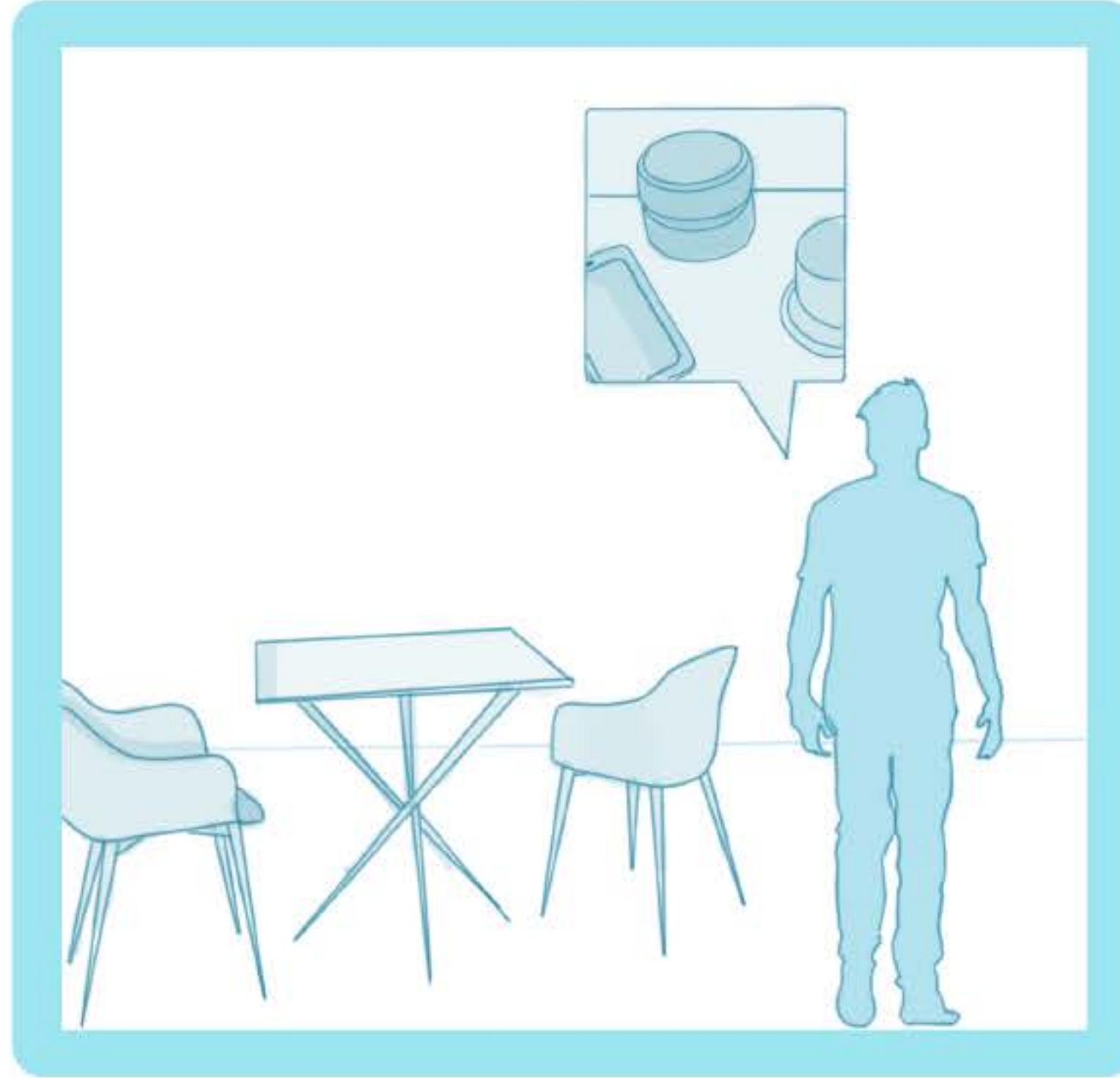
Adjustable lighting



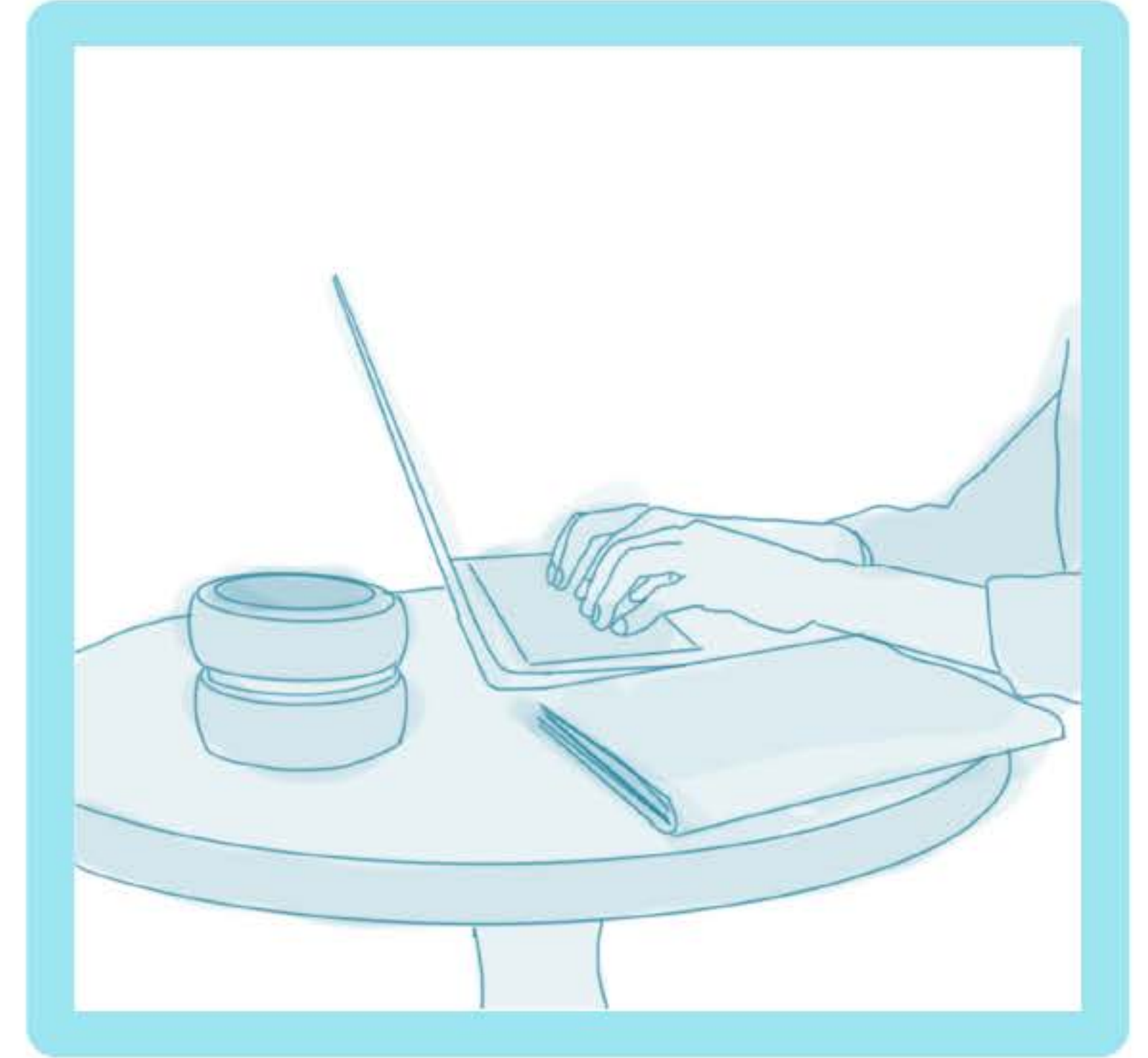




Book your slot through the app



Arrive at the premises and enter your booking number into the device



Work until your time is up and avail of the benefits



A grayscale photograph of a person with long hair, seen from the side, working on a large sheet of paper. The paper is covered with numerous sticky notes, some of which contain handwritten text and diagrams. The person is holding a pen and appears to be writing or drawing on one of the sticky notes. The overall scene suggests a collaborative or individual design process.

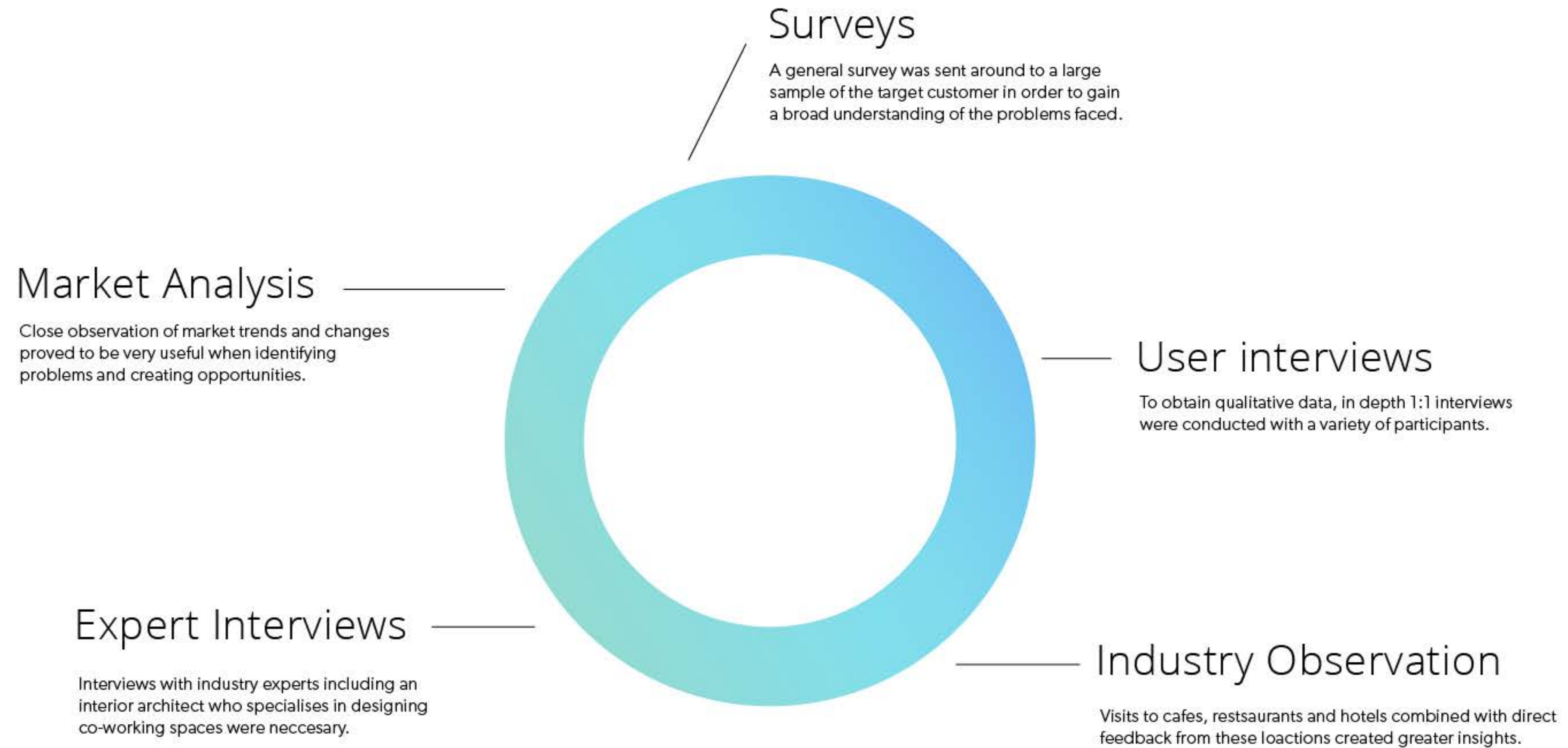
# The Process

**Empathise. Define. Ideate. Build. Test**



# Research

---





# User Interviews

---



"The world is changing and remote work is the way forward, my workplace has moved remote 4 days per week"



"I will definitely want to leave the house more to work once the pandemic eases, I find myself stuck inside the same 4 walls all day."



Zoom Interview



# Findings

---



80% of employees surveyed started to work remotely during covid.



31% of companies are planning to downsize their office space in favour of remote.



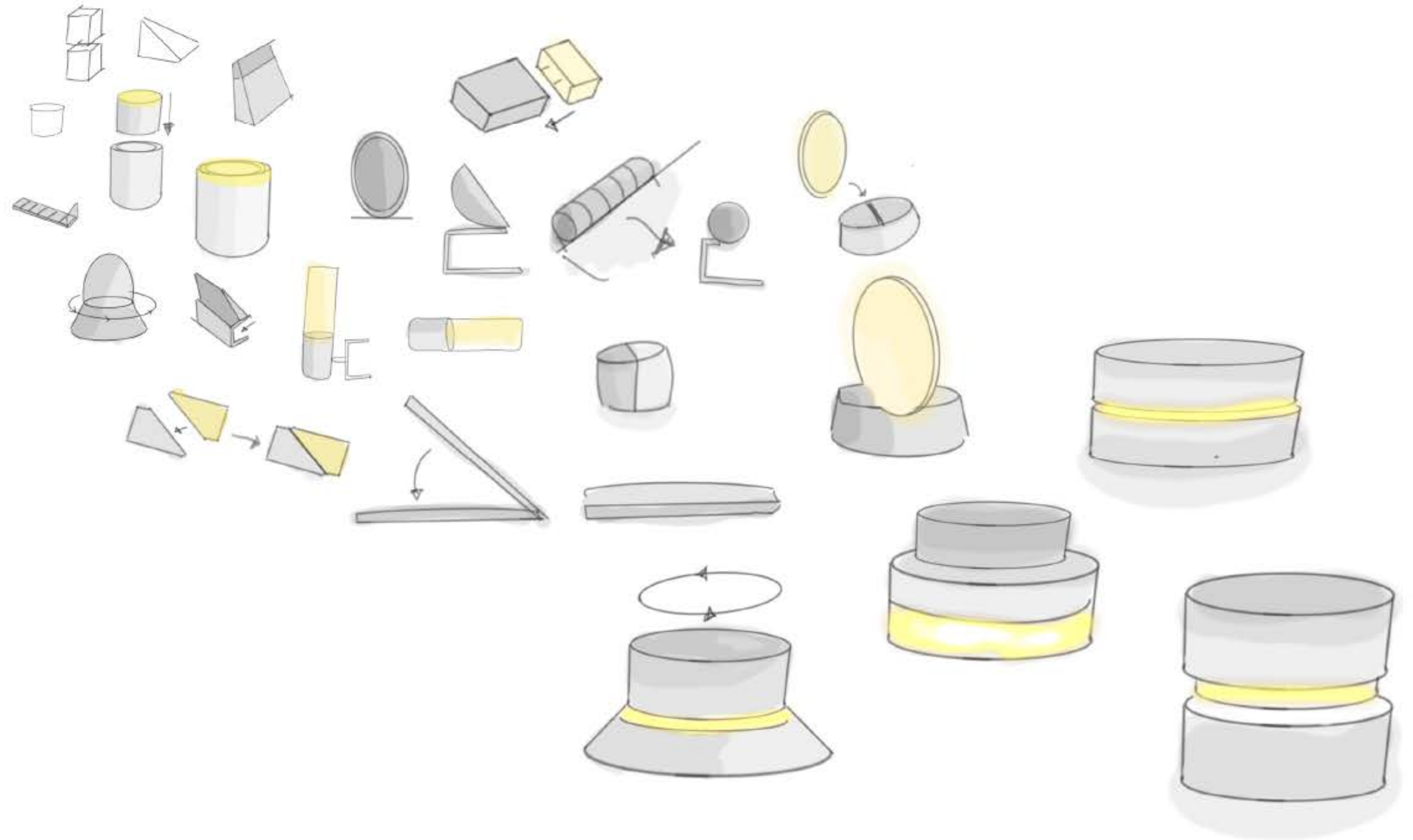
Between 2017 and 2018 the number of flexible offices in the UK grew by 22%.



# Concept Development

---

Continuous sketching was completed alongside sketch modelling to create the final design.





\_\_\_\_\_

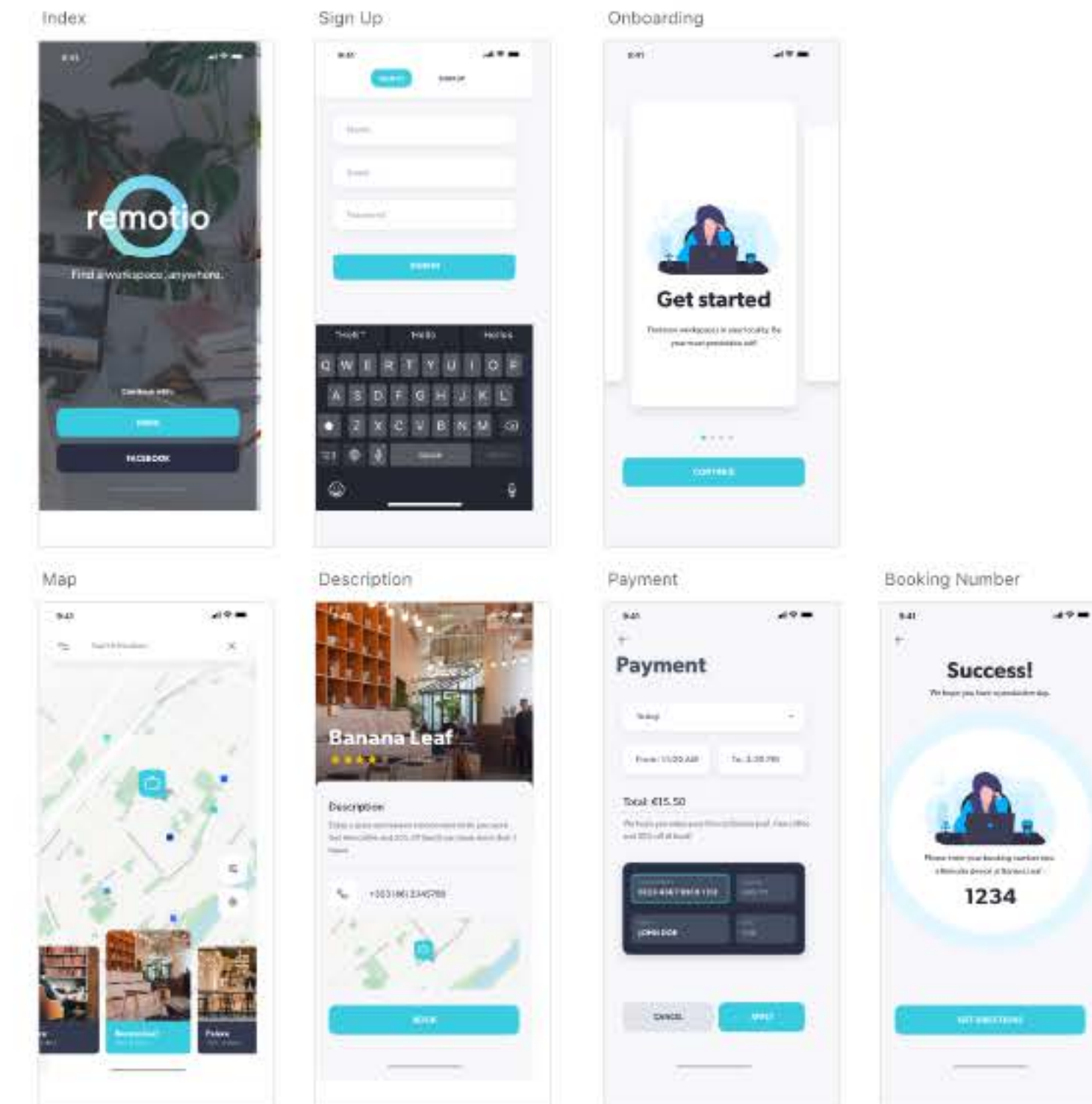




# User Interface

It's was important to create a cohesive feeling between the smart device and app.

The device needed to be calming and dark, to avoid distracting the user and blending into the environment whereas the app needed to be clear and descriptive to make booking easier.





## Gibson Semibold

**AA** ABCDEFGHIJK  
LMNOPQRSTU  
VWXYZ

**aa** abcdefghijk  
lmnopqrstu  
vwxyz

## Colour palletete



A soft gradient of green and blue reflects the brand values of trust, quality, competence and loyalty.



#445065

#445065

remotio +  = remotio

A catchy, patentable and brandable name.

A recognisable and futuristic symbol.





# Usability Testing

Various tests were conducted in order to improve the user experience. Two main tasks were carried out.

1. Complete registration
2. Book a work space





# Industry Feedback

**"The overall concept from a restaurant owners point of view seems like a win win situation.**

Revenue generated for tables that may be sitting idle mid-week and you can set a time when the table is needed back. Its very creative and certainly on trend at the moment. Great way for people working from home get out of the house for a few hours. I would definitely look into it for Rocksalt if it was available."

Rocksalt Cafe

**"Very promising for potential in terms of capturing new customers in a cost-efficient fashion and in particular the ability to generate demand for low demand times and days. Demand could be generated for basic services such as a desk or more profitable areas such as small meeting rooms or boardrooms. As an owner and operator of venues, this is something I would be interested in exploring if it came to the market."**

Align Partners

**"I think this is something we could really use in our hotel.** During the week once residents have checked out the restaurant can be very quiet until lunchtime so **we could definitely accommodate workers in our public areas or our meeting rooms.** For a set price we could provide the space and tea/coffee/snacks as required. The client would not feel under pressure to leave or keep buying coffees etc as they'd know they have the area for a set period of time."

Imperial Hotel



Rocksalt Cafe



Align Partners



Imperial Hotel





# The Prototype











The components included a round 3.4 inch lcd, HMI to MIPI driving board, adapter plate, FFC cable, Raspberry Pi Zero, SD card, HDMI adapter.









## Develop

My vision is to expand the capabilities of Remotio in order to serve a wider audience. The potential to arrange and book meetings through the app has generated great interest so far, this is an area I would like to explore in the future.





Thank you!



[niamhkenny98@icloud.com](mailto:niamhkenny98@icloud.com)



[www.linkedin.com/in/niamh-kenny-4901a1195](https://www.linkedin.com/in/niamh-kenny-4901a1195)



00353 86 2722316